



# Conisbrough Castle

## English Heritage



Client contact  
**John Clarke**  
 Project Manager  
 1 Waterhouse Square  
 138-142 Holborn  
 London EC1N 2ST  
 Tel 0207 973 3000

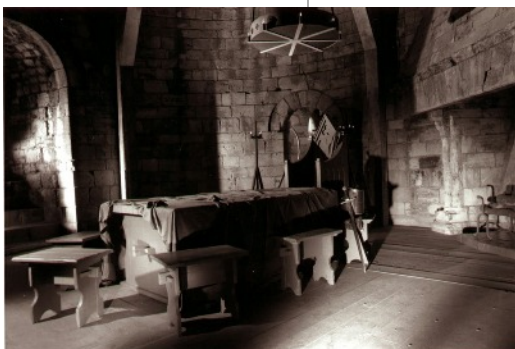
- An Exhibition Plus project
- A design and build contract, value £105k
- AV contractors - Electrosonic

Working within a very restricted space, we developed the 3 dimensional play that was designed to make visitors believe that they were taking part in a live performance, with real actors. All voices from this award winning programme came from off set. Visitors saw fleeting shadows of the main characters of this dramatic play which told of an event that happened in the late 15th Century when the Earl of Lancaster set siege to the castle. As his army approaches, visitors take up the play on the ground floor (**Act 1**) when in an urgent conversation takes place between an armourer and a young boy, who were hauling the timber hoardings from the basement, up to the roof. **Act 2** takes place in the council chamber on the 1st floor with an urgent war council taking place around the large central table. Visitors sat around the table and each is given a voice -speakers for each council member were under each chair. **Act 3**, the final denouement took place in the Earl's private bedchamber between him and his wife (in the bed).

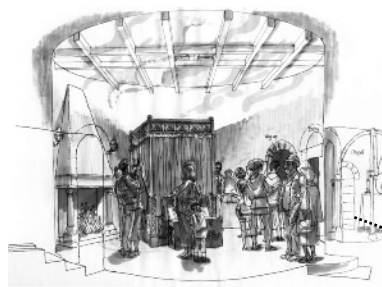
Once visitors had completed the play on the top floor, interpretation panels were illuminated for them to explore each floor, on the way down.



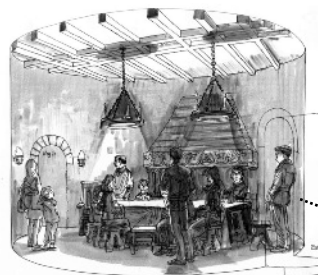
Act 3 the bedchamber



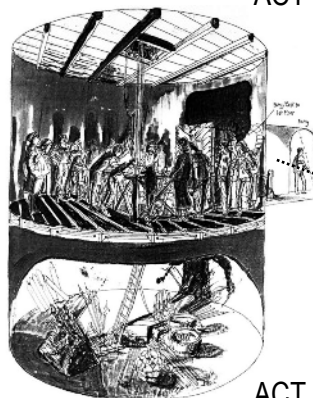
Act 2 - the council chamber



ACT 3



ACT 2



ACT 1

