



www.explus.co.uk

Client contacts

Karen Wardley
Collections Manager

Dan Mathews

Project Manager

Leisure & Culture Division
Southampton City Council

Tel: 023 80833469

dan.mathews@southampton.gov.uk

Tudor House - Southampton

Client: Southampton County Council

- HLF lottery funded
- Interpretation design and design agent to client
- Contract value £640,000



Working with the local authority client, Exhibition Plus have produced an entirely new interpretation scheme for this 800 year old site. Working with the SCC in house team, architects Purcell Miller Tritton, Focus Consultants, Centre Screen Productions, Atlas AV, Fusion LX and Perks Willis Design - our design aim was to reduce the amount of interpretation visible within each space to a minimum, so as not to hide the unique architecture, whilst still delivering an enjoyable and worthwhile experience, to a very wide target audience.

Included in the interpretation is the Big Show introduction, audio tours, a range of lenticular graphics panels (they contain up to 3 visuals that change as the viewpoints moves) and a unique audio visual device that tracks the actual 360 ° movement of the visitor and gives interactive feedback, called Guida Rotate.

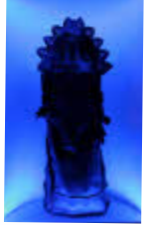
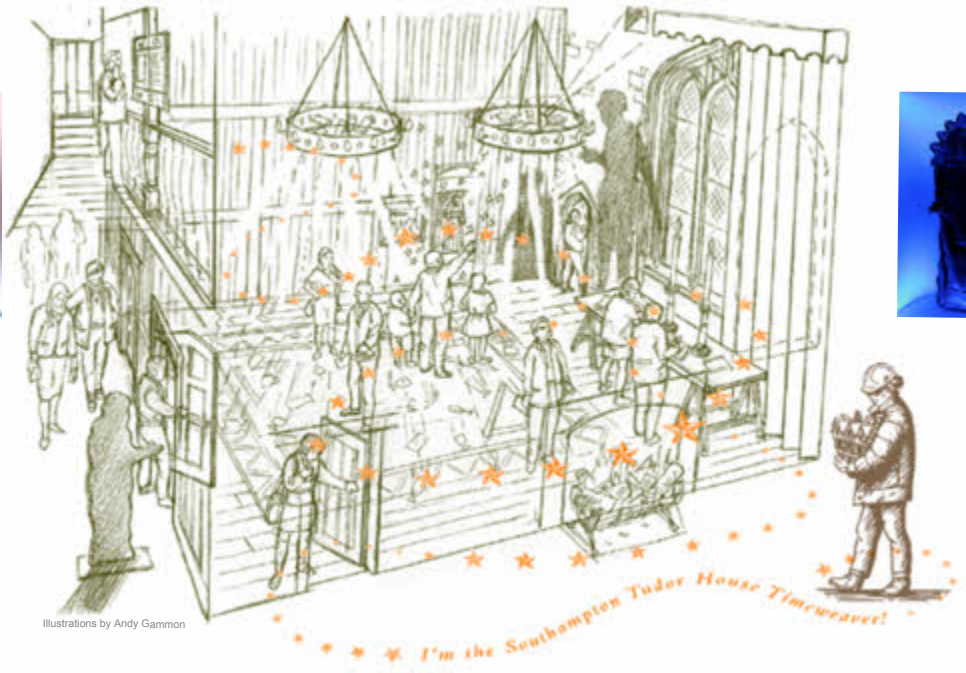


Guida Rotate - Newly developed for Tudor House. Monitor rotates 360° tracking 3D photos and reconstructions. <http://youtu.be/WU7Rp1hN4m8>





Tudor House - Sound and Light experiences



The Big Show is an introductory sono-et lumiere experience that introduces the characters, and architecture for the visit to come.



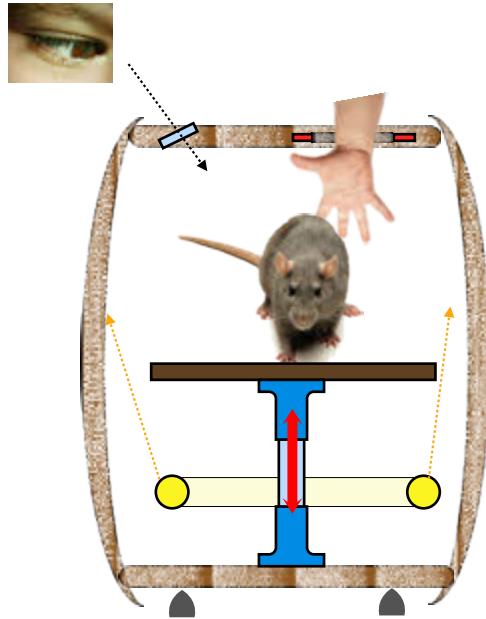
Three audio tours for differing target audiences



The cellar bomb shelter recreates conditions here during WW2 using light and sound. The 3 dimensional landscapes were designed by Peter Key.



Tudor House - Interactive Experiences





Tudor House - Artefacts and Room Sets





Tudor House - Graphics and Illustration



Lenticular illustrations show the room in differing periods



Lenticular mural

King John's Palace

You are overlooking the ruins of a fine stone house called King John's Palace, one of the best examples of Norman architecture in the country. It was owned by John Wyllegod - a rich merchant, not a king - in the 1300s. It later became part of the town's defensive wall. Today, it is sometimes used for events.

By the 1700s, when the house was built, Southampton was already an important port. The house was on the quayside where ships loaded and unloaded their cargoes.

After a raid by the French in 1033, the town's sea defences were strengthened by order of the King. The door and windows in the front of the house were blocked with stone and it became part of the town's defensive wall.

In the 1700s, it was used as a coach house and stables. In the 1800s, it was a real merchant's business. By the 1900s, it housed Mr Spranger's private museum. Now it is just a shell.

King John's Palace, the quayside and the town beyond, in the 1300s.

King John's Palace YOU ARE HERE

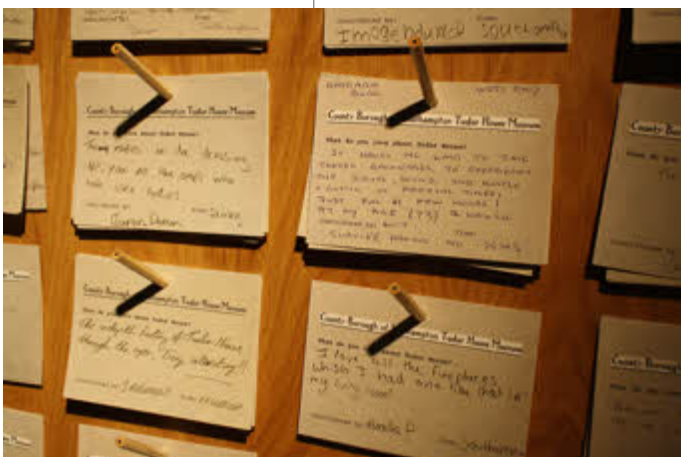
The next panel is back through the wall and along the path to the left.



Illustration by Andy Gammon. Graphics by Sue Perks.



Tudor House - Temporary Exhibition



Community groups interact with Tudor House exhibits and produce artistic responses

Mechanised donations box by sculptor by Carlos Zapata.

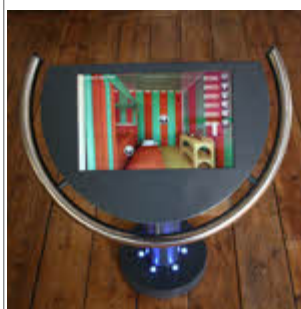
What do you love about Tudor House ?

Visitor cards where the pencil becomes the peg to hang the response.





Tudor House - Guida Rotate



Visitors swivel the monitor in 360° to explore the room in 4 differing periods. The projection to the rear allows all to view the experience.



www.guidarotate.co.uk

