



ICE AGE



The Yorkshire Museum in York has taken delivery of its own "fridge mountain" for its new exhibition, Ice Age, which has just opened. The 6-metre high mountain of 50 fridges, fridge freezers, ovens and mini fridges has been built in the museum's main gallery.

Visitors to Ice Age are able to open all the fridges on the bottom row of the "mountain" and discover museum artefacts, fantastic facts about the Ice Age with even real ice cores.

The Ice Age exhibition explores the effect of both the icy and the warm periods of the last two million years on our landscape and wildlife - particularly in Yorkshire. It also looks at what climate could hold in store for us in the future and the way our activities are affecting the climate. Sound installations by Craig Vear accompany each gallery.

The 435 square metre exhibition, designed by Mark Magidson of Exhibition Plus cost £75,000 to build (£173/sq m).

TOP FIVE MUSEUMS
Tim Teeman

1 BARBARA HIND: MONGOLIAN BUDDHISM
Images depicting the Mongolian religion and contemporary society. World Museum, Liverpool, Brown Street, Liverpool (www.worldmuseum.org.uk), until Sep 30. 0151-478 4393. Fri-Sat

2 ICE AGE
Show exploring how the ice age transformed the UK's landscape and wildlife. Britain could be gripped by another ice age in just 500 years. Yorkshire Museum, Museum Gardens, York (www.yorkshiremuseum.org.uk), until Dec 31. 01904 687687.

3 JOHN HOWARD: WHITEHOUSE: KEEPER OF THE FLAME
A commemorative of the author and educationalist's life. His wide circle of contacts included George Bernard Shaw and the polar explorer Fridtjof Nansen. Ruskin Library, University of Lancaster (www.lancs.ac.uk/users/ruskinlib), until Sep 30. 01524 593587.

4 THEIR PAST YOUR FUTURE
Marking 60 years since the end of the Second World War, this touring exhibition focuses on how war changed our notions of conflict and our notions of citizenship. Tulle House Museum & Art Gallery, Carlisle (www.tullehouse.co.uk), until Sep 4. 01228 534781; World Museum Liverpool, William Brown Street (www.liverpoolmuseums.org.uk), until Sep 4. 0151-478 4393.

5 LIVERPOOL TO NEW YORK: THE ONLY WAY TO CROSS
Long before easyCruise was a blink in Stelios's eye, the Ark and White Star lines could get you across the Atlantic in six days flat. Maritime Museum, Albert Dock, Liverpool (www.liverpoolmuseums.org.uk), until Aug 14. For more museums, go to www.timesonline.co.uk/theknowledge/museums

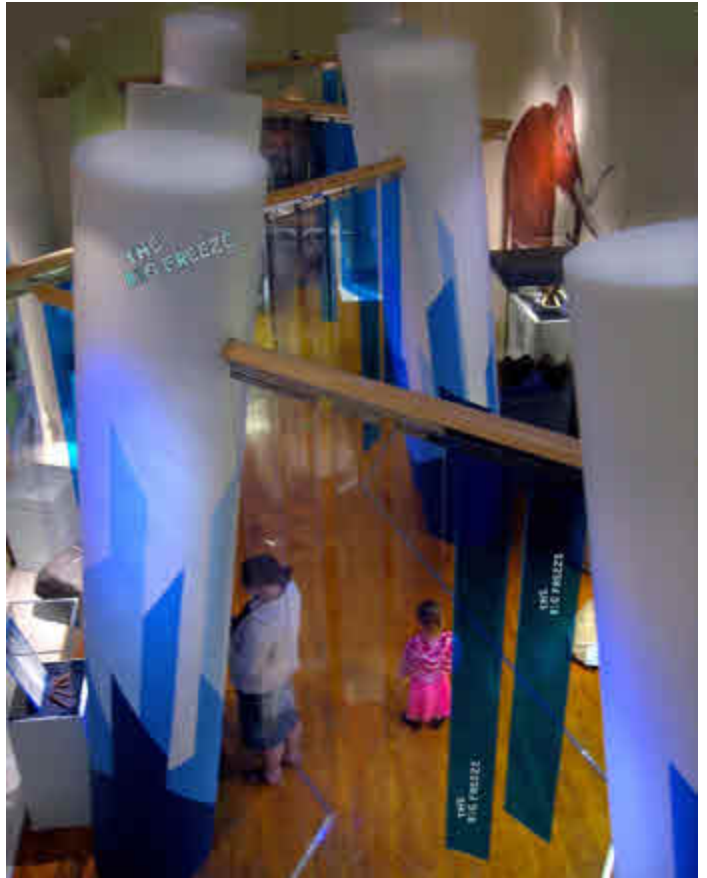
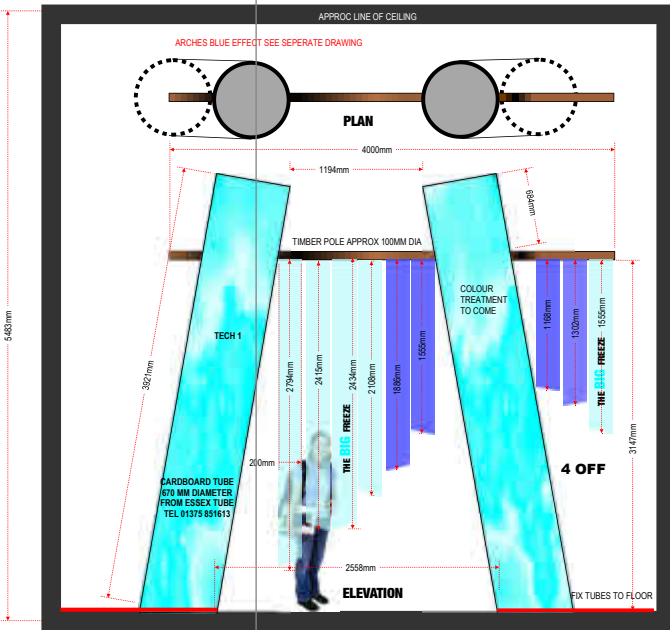
The Times newspaper August 6th 2005



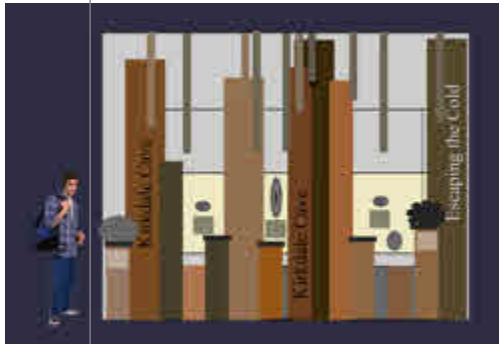


ICE AGE





CAVE



ICE LAB



ICE AGE